

什麼是大腸癌？

What is Colorectal Cancer

消化系統末端約五英尺的部份稱為大腸或結腸，而此部份最末六吋，靠近肛門的地方又稱直腸。大腸癌就是在這些部位形成。大腸癌的病變速度較為緩慢。一開始時可能只是腸道內長出的一些腫瘤或良性息肉，經年累月，這些逐漸增大的息肉可能會演變成惡性腫瘤。若早作檢查或切除可見的良性息肉，可以避免患上大腸癌，把握盡早治愈的機會。

Colorectal cancer develops in the large intestine or rectum. The large intestine or colon is the lowest portion of the digestive system and measures about 5 feet long. The rectum is the last 6 inches of the colon. Colorectal cancer grows very slowly in the beginning. It can begin as a cancerous growth or it can develop from a benign (non-cancerous) polyp. Over time, some of these polyps grow and become malignant (cancerous).

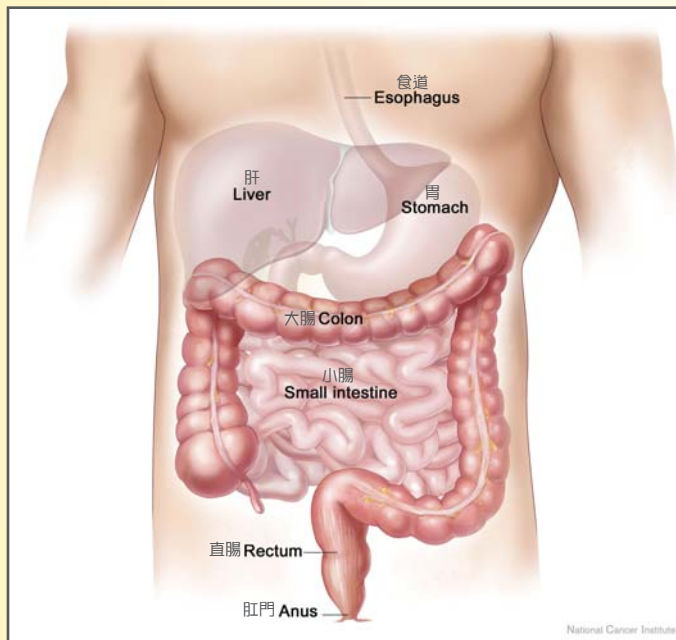
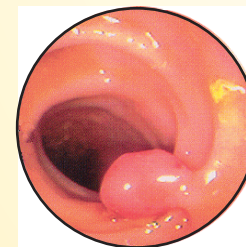


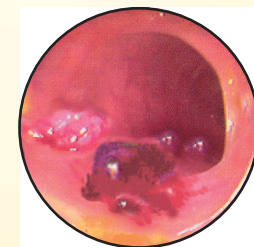
Photo: National Cancer Institute

正常的消化系統 Normal Digestive System

Screening tests find polyps that can be removed before they turn into cancer. Screening tests can also find early colorectal cancer when the chance of being cured is very good.



息肉 Polyp



癌腫 Cancer